

آموزش نرم افزار

EndNote

فرزانه همتیان

کتابخانه مرکزی دانشگاه علوم پزشکی شهرکرد

بهار ۱۴۰۲

# EndNote چیست؟

- EndNote در لغت به معنای نکته پایانی است.
- پایگاهی جهت ذخیر و سازماندهی منابع مورد استفاده در نوشتن مقالات، پایان نامه ها و کتابها



# اصطلاحات رایج در EndNote

- **Citation**: به منابع استناد شده در متن مقاله گفته می‌شود.
- **Bibliography**: فهرست منابع که در پایان متن پژوهشی یا مقاله ذکر می‌شود.
- **Style**: سبکی که مجلات مختلف برای نوشتن منابع از آنها استفاده می‌کنند.

# چند نمونه Style

## • استایل Vancouver

Peper RJ, Mayer RE. Generative effects of note-taking during science lectures. *Journal of Educational Psychology*. 1986;78(1):34-8.

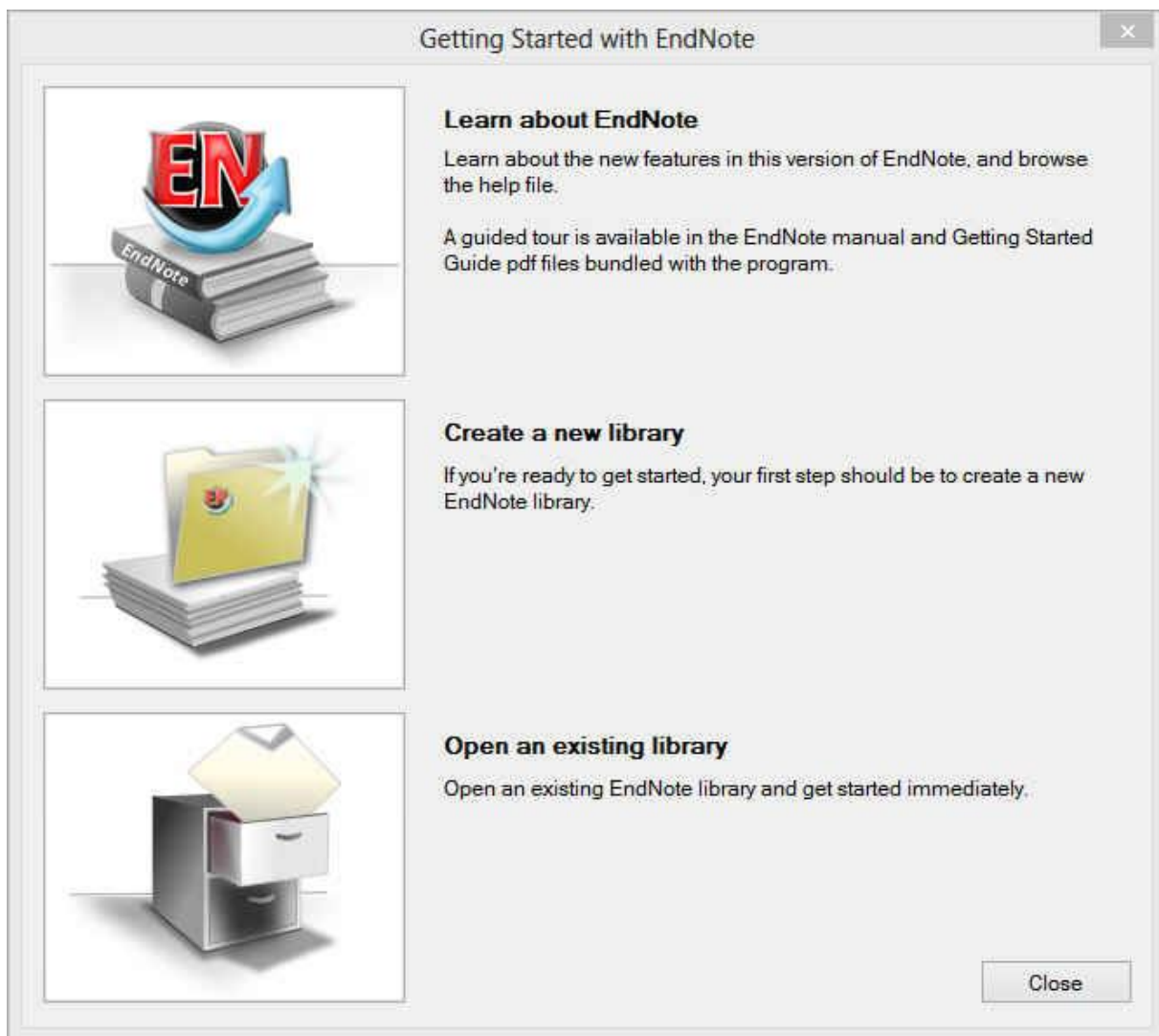
## • استایل Annotated

Peper, R. J. and R. E. Mayer (1986). "Generative effects of note-taking during science lectures." *Journal of Educational Psychology*  
78(1): 34-38.

## • استایل APA 6th

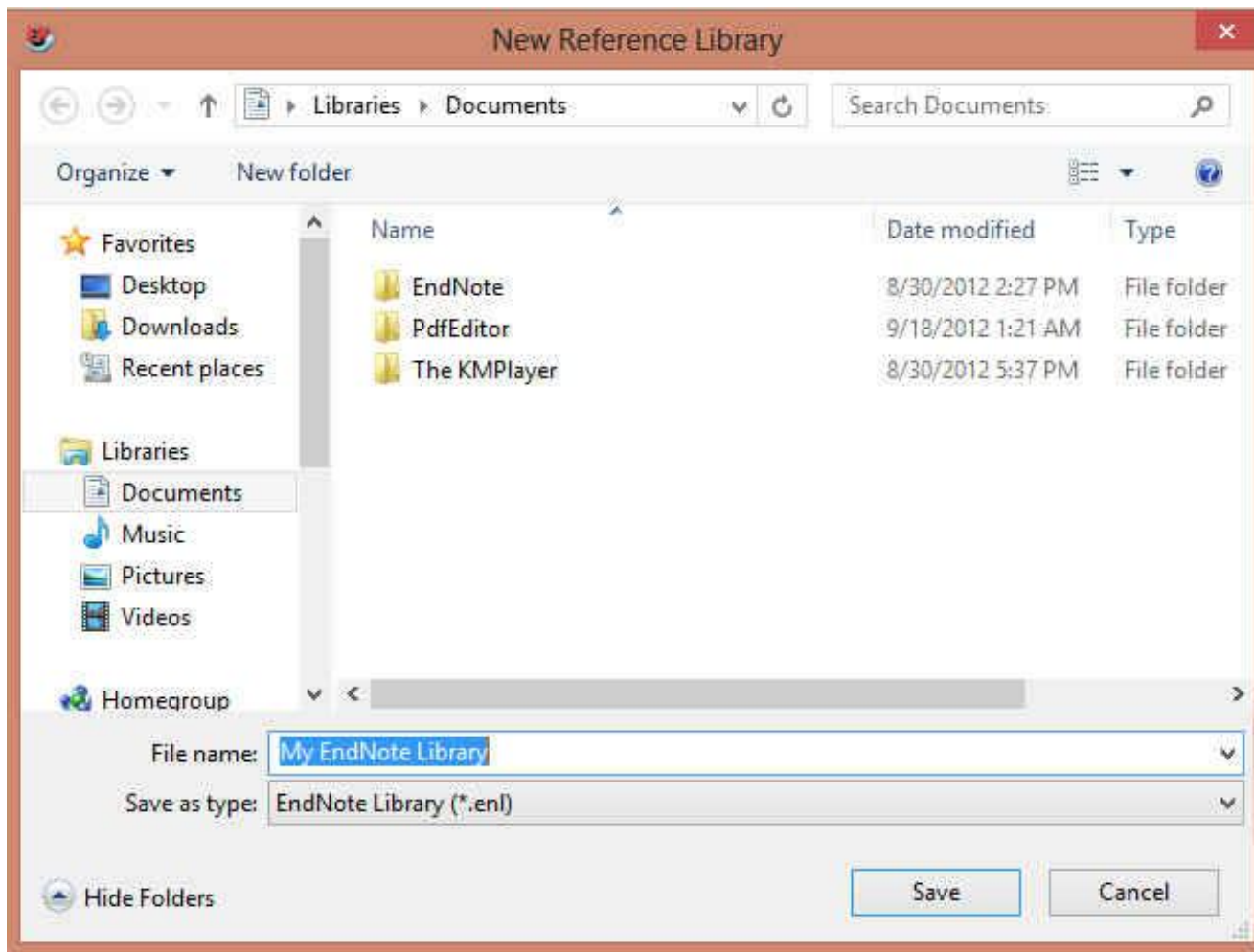
Peper, R. J., & Mayer, R. E. (1986). Generative effects of note-taking during science lectures. *Journal of Educational Psychology*, 78(1),  
34-38.

# استفاده از نرم افزار ENDNOT



- چنانچه برای اولین بار از این برنامه استفاده می کنید، پنجره زیر برای شما نمایش داده می شود.
- با انتخاب گزینه دوم می توانید یک Library جدید بسازید.
- در صورت داشتن Library قبلی، گزینه سوم را انتخاب نمایید.

# استفاده از نرم افزار ENDNOT



- بعد از انتخاب گزینه دوم، در پنجره باز شده نام و محل ذخیره شدن Library خود را انتخاب نمود و بر روی دکمه SAVE کلیک کنید.
- شما همچنین می توانید برای ایجاد Library جدید از منوی File/ New واقع در نوار ابزار بالای برنامه EndNote هم استفاده نمایید.

# روش‌های ورود منابع به برنامه

A. وارد کردن مستقیم منابع از طریق برنامه EndNote

B. وارد کردن منابع از طریق پایگاه‌های اطلاعاتی

C. وارد کردن منابع از طریق Google Scholar

D. تایپ دستی منابع

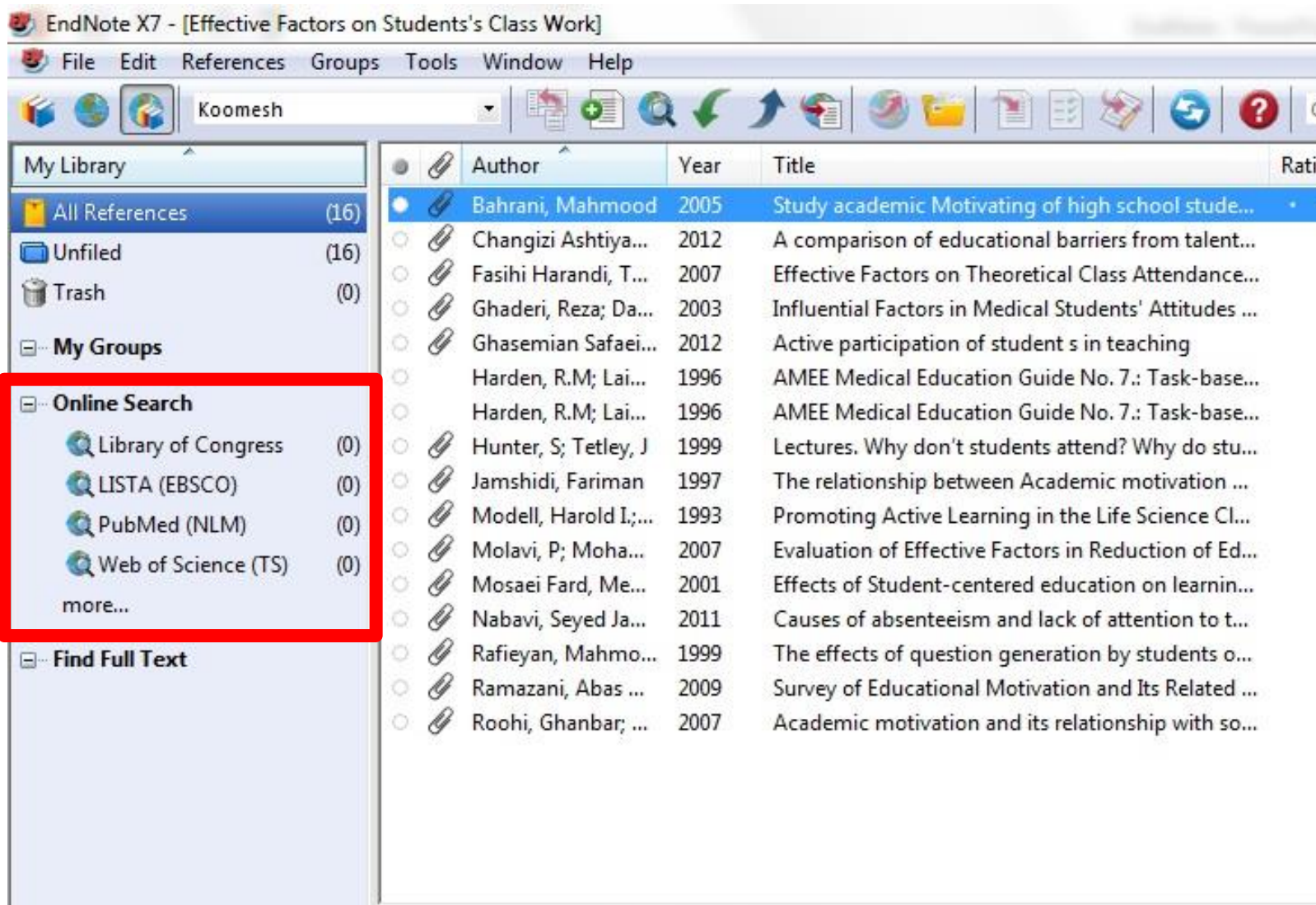
E. وارد کردن منابع از طریق فایل PDF

# روش‌های ورود منابع به برنامه

روش اول: وارد کردن مستقیم منابع از طریق برنامه EndNote

• در بخش Online Search فهرستی از پایگاه‌ها را مشاهده می‌نمایید. برای مشاهده کامل روی More کلیک کنید.

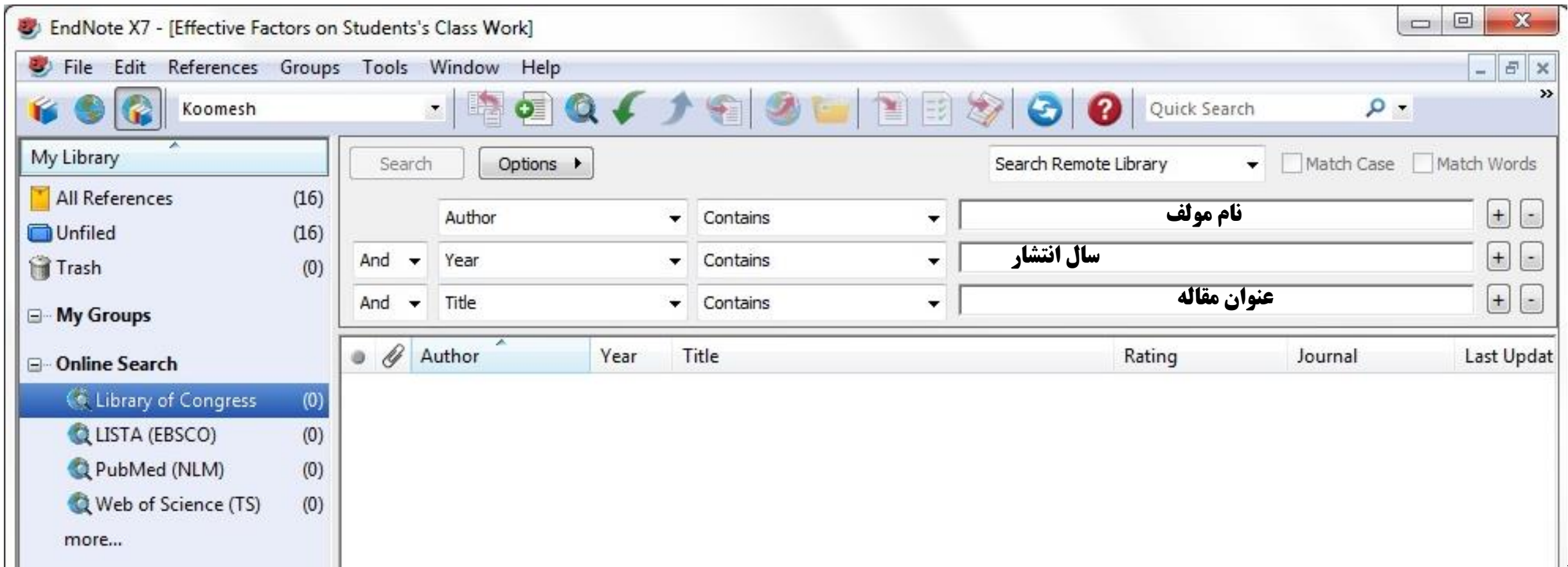
• برخی مقالات این پایگاه‌ها رایگان هستند که مهم‌ترین آنها PubMed (NLM) و Web of Science هستند.





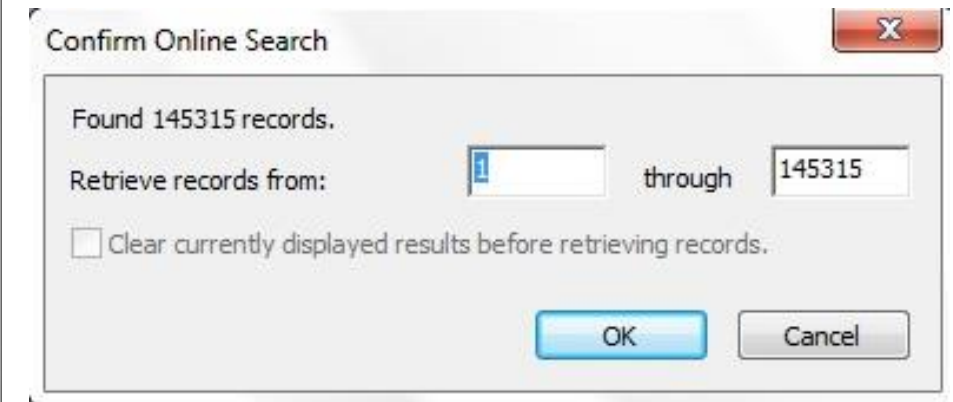
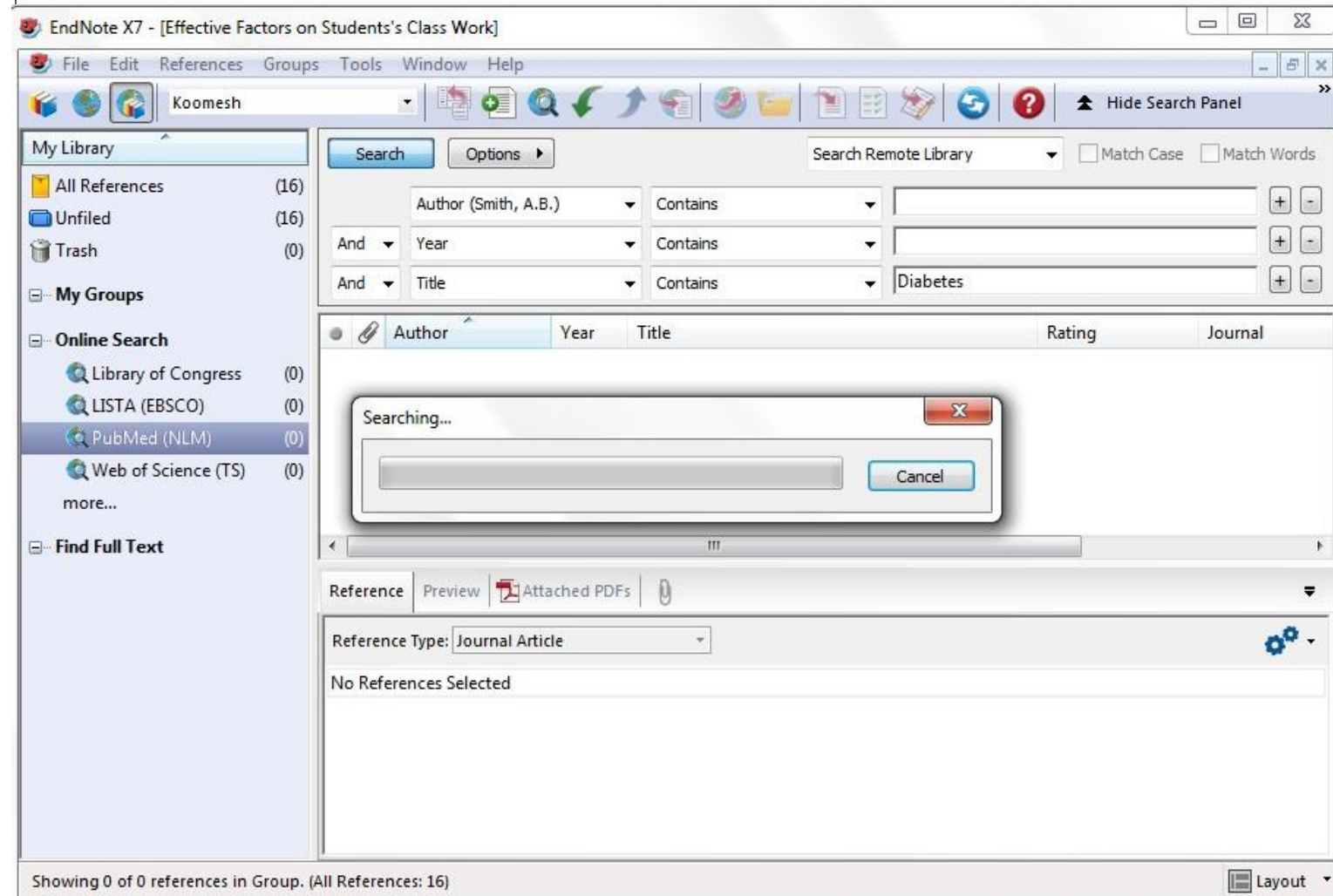
# روش‌های ورود منابع به برنامه

- برای وارد کردن منابع از این طریق باید قسمت‌های مورد نیاز پنجره نشان داده در شکل زیر را تکمیل نمایید. پرکردن تمام فیلدها مورد نیاز نیست. می‌توانید فقط کلمات کلیدی را وارد کرده و اقدام به جستجو نمایید. این پنجره در نسخه ۴ و ۵ برنامه در پایین و در نسخه ۶ در بالا قرار دارد.



# روش‌های ورود منابع به برنامه

- پس از اتصال به پایگاه و با استفاده از کلمات کلیدی خود شروع به جستجو نمایید.
- همانطور که در شکل زیر نشان داده شده است نتایج جستجو به صورت زیر ظاهر می‌شود.



# روش‌های ورود منابع به برنامه

- شما می‌توانید منابع غیر ضروری را با انتخاب و فشردن دکمه Delete روی کیبورد و یا با کلیک راست بر روی منابع انتخابی و انتخاب گزینه Move Reference to trash آن را حذف نمایید.

The screenshot displays the EndNote X7 interface. The left sidebar shows the 'My Library' section with 'All References (500)', 'Unfiled (500)', and 'Trash (0)'. The 'Online Search' section includes 'Library of Congress (0)', 'LISTA (EBSCO) (0)', 'PubMed (NLM) (500)', and 'Web of Science (TS) (0)'. The main window shows a search for 'Diabetes' with results in a table. The table has columns for Author, Year, Title, Rating, Journal, Last Updated, and Reference Type. The first row is highlighted in blue.

Author	Year	Title	Rating	Journal	Last Updated	Reference Type
	2005	Weight-Loss Surgery for Adults With Diabetes ...		Comparative Ef...	10/26/2013	Book Section
	2013	In this issue of diabetes care	*****	Diabetes Care	10/26/2013	Journal Article
	2013	Highlights from the latest in diabetes research		Diabetes	10/26/2013	Journal Article
	2013	In this issue of diabetes		Diabetes	10/26/2013	Journal Article
	2013	Best practices for the management of foot ulc...		Adv Skin Woun...	10/26/2013	Journal Article
	2013	Diabetes: Phentermine-topiramate extended...		Nat Rev Endoc...	10/26/2013	Journal Article
	2013	[Modern views of causes of microvascular com...		Vestn Oftalmol	10/26/2013	Journal Article
	2013	[A combination of dipeptidyl peptidase-4 inhibi...		Ter Arkh	10/26/2013	Journal Article
	2013	[13th Symposium: Diabetes mellitus--ocular co...		Vnitr Lek	10/26/2013	Journal Article
	2013	Practice nurse diabetes helpline has little impa...		Nurs Stand	10/26/2013	Journal Article
	2013	Charity funds study of diabetes and diet		Nurs Stand	10/26/2013	Journal Article
Abbas, S.; Raza, ...	2013	Association of Genetic polymorphism of PPAR...		J Biomed Sci	10/26/2013	Journal Article
Abdallah, M. S.; ...	2013	Quality of life after PCI vs CABG among patien...		JAMA	10/26/2013	Journal Article
Abdel-Hamid, N....	2013	Underlying Pathways for Interferon Risk to Ty...		Curr Diabetes ...	10/26/2013	Journal Article
Achong, N.; Dun...	2013	The peripartum management of glycaemia in ...		Diabetes Care	10/26/2013	Journal Article
Adepoju, O. E.; B...	2013	Can Chronic Disease Management Programs fo...		Popul Health M...	10/26/2013	Journal Article
Adler, R. N.; Harl...	2013	Diabetes: 8 Strategies to put into Practice		J Fam Pract	10/26/2013	Journal Article
Admiral W. M.	2013	Life-style recommendations on weight loss in		Med Tiidechr G	10/26/2013	Journal Article

Showing 500 of 500 references in Group. (All References: 500)

http://www.ncbi.nlm.nih.gov/pubmed/?term=diabetes

diabetes - PubMed - NCBI

NCBI Resources How To Sign in to NCBI

PubMed.gov US National Library of Medicine National Institutes of Health

PubMed diabetes Search

RSS Save search Advanced Help

Show additional filters

Display Settings: Summary, 20 per page, Sorted by Recently Added Send to: Filters: Manage Filters

Article types  
Clinical Trial  
Review  
More ...

Text availability  
Abstract available  
Free full text available  
Full text available

Publication dates  
5 years  
10 years  
Custom range...

Species  
Humans

Results: 1 to 20 of 431177 Selected: 4

1.  [Long term outcomes of aortic root replacement](#)  
Bang JH, Im YM, Kim JB, Choo SJ, Chung CH  
Korean J Thorac Cardiovasc Surg. 2013 Apr;46(2):104-110. doi: 10.5090/kjtcs.2013.46.2.104. Epub 2013 Apr 9.  
PMID: 23614095 [PubMed - in process]

2.  [Deletion of aldose reductase from mice inhibits](#)  
[capillary degeneration and superoxide generation](#)  
Tang J, Du Y, Petrash JM, Sheibani N, Kern TS.  
PLoS One. 2013 Apr 16;8(4):e62081. doi: 10.1371/journal.pone.0062081. Print 2013.  
PMID: 23614016 [PubMed - in process]

3.  [Co-Culture of Neural Crest Stem Cells \(NCSC\) and Insulin Producing Beta-TC6 Cells Results in Cadherin Junctions and Protection against Cytokine-Induced Beta-Cell Death.](#)

Choose Destination

File  Clipboard  
 Collections  E-mail  
 Order  My Bibliography  
 Citation manager

Generate a file for use with external citation management software.

Download 4 citations.

Create File

Download CSV

gestational diabetes  
diabetes type 2  
diabetes insipidus

Titles with your search

100%

روش دوم: وارد کردن منابع از طریق پایگاه های اطلاعاتی

PubMed

- My Library
- All References (40)
  - Unfiled (0)
  - Trash (0)
  - My Groups
  - Online Search
    - Library of Congr... (0)
    - LISTA (EBSCO) (0)
    - PubMed (NLM) (0)
    - Web of Science ... (0)
  - more...

EndNote Web  
transfer...

Find Full Text

- Author
- Frohman
- Vischer,
- Vischer,
- Vischer,
- Vischer,
- Vischer,
- Towbin,
- Surhone
- Sorensen
- Sharafat
- Sai, E.; S
- Saadatn

Preview Search

[1] Frohman  
2;354(9):94

## Choose An Import Filter

Name	Information Provider
PsycINFO (DS)	DataStar
PsycINFO (EBSCO)	EBSCO
PsycINFO (OCLC)	OCLC
PsycINFO (OvidSP)	OvidSP
PSYINDEXplus Lit AV (OvidSP)	OvidSP
PSYINDEXplus Tests (OvidSP)	OvidSP
PubMed (NLM)	National Library of Medicine
PubMed Central (NLM)	National Library of Medicine
QPAT	Questel
ReadersGuideAbs (OCLC)	OCLC
ReferBibIX	Generic
Reference Update (TS)	Thomson Reuters
Reference Update (TS)	Thomson Reuters

Quick Search

Find by

Less Info:

Cancel

Choose

File Name: PubMed (NLM).enf

Created: Thursday, April 25, 2013, 4:19:41 PM

Modified: Tuesday, February 15, 2011, 4:44:44 PM

Based On:

Category: National Library of Medicine

Comments:

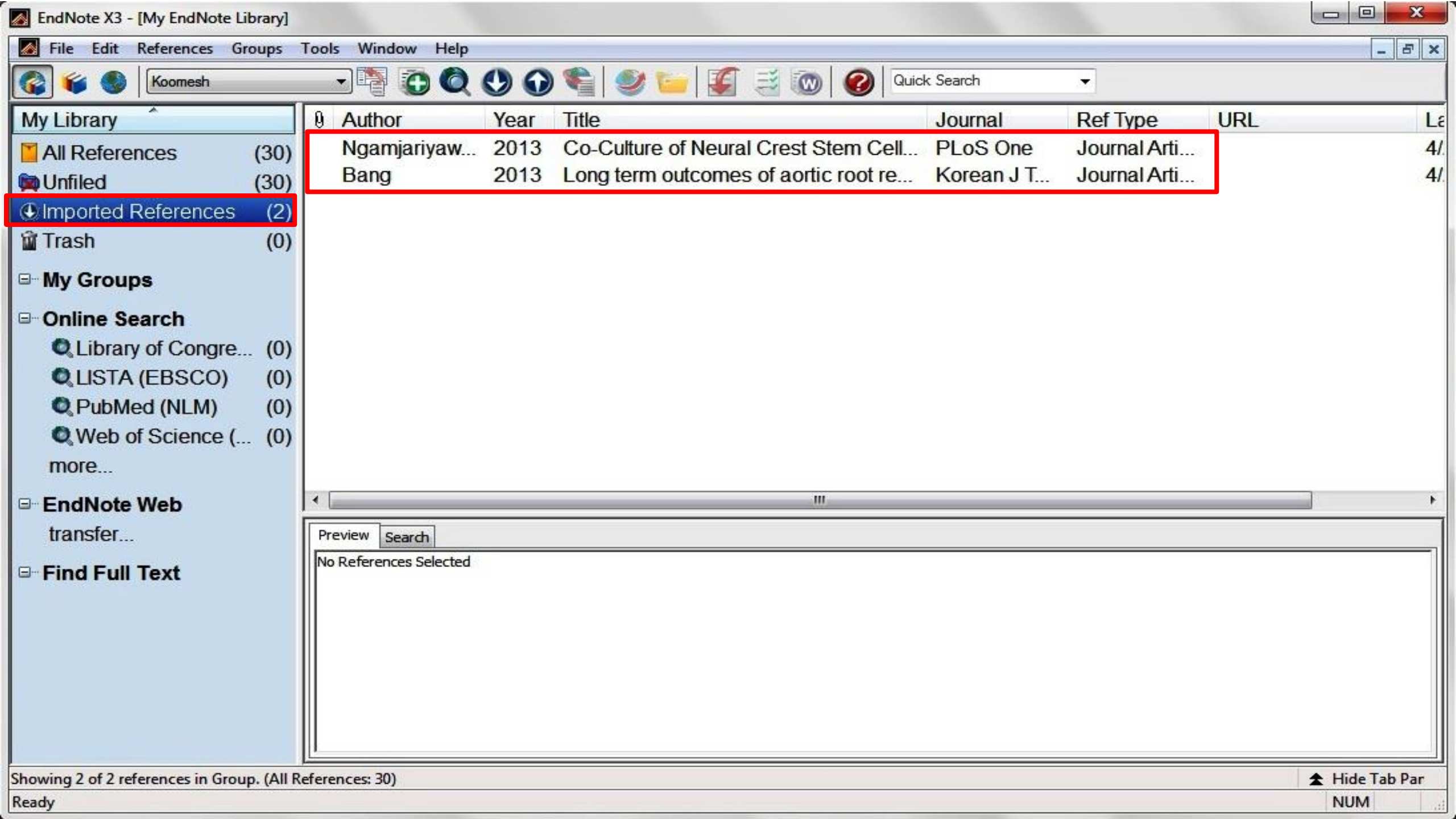
DOWNLOAD INSTRUCTIONS

1. Go to the PubMed website in your web

Showing 493 of 493 import filters.

Ref Type	URL
Med Journal Arti...	http://www.ncbi.nlm...
&... Journal Arti...	http://www.science...
&... Journal Arti...	http://www.science...
&... Journal Arti...	http://www.science...
&... Journal Arti...	http://www.science...
&... Journal Arti...	http://www.science...
on ... Journal Arti...	http://www.ncbi.nlm...
Book	http://books.google.
N... Journal Arti...	http://www.ncbi.nlm...
Journal Arti...	http://www.zjrms.ir/...
Journal Arti...	
eu... Journal Arti...	http://www.ncbi.nlm...

pathogenesis. N Engl J Med. 2006 Mar



- My Library
- All References (30)
- Unfiled (30)
- Imported References (2)
- Trash (0)
- My Groups
- Online Search
  - Library of Congre... (0)
  - LISTA (EBSCO) (0)
  - PubMed (NLM) (0)
  - Web of Science (... (0)
  - more...
- EndNote Web transfer...
- Find Full Text

Author	Year	Title	Journal	Ref Type	URL
Ngamjariyaw...	2013	Co-Culture of Neural Crest Stem Cell...	PLoS One	Journal Arti...	4/...
Bang	2013	Long term outcomes of aortic root re...	Korean J T...	Journal Arti...	4/...

Preview Search

No References Selected

http://www.ncbi.nlm.nih.gov/pubmed/?term=diabetes

diabetes - PubMed - NCBI

NCBI Resources How To Sign in to NCBI

PubMed.gov US National Library of Medicine National Institutes of Health

PubMed diabetes Search

RSS Save search Advanced Help

Show additional filters

Display Settings: Summary, 20 per page, Sorted by Recently Added **Send to:** Filters: Manage Filters

Article types

- Clinical Trial
- Review
- More ...

Text availability

- Abstract available
- Free full text available
- Full text available

Publication dates

- 5 years
- 10 years
- Custom range...

Species

- Humans

Results: 1 to 20 of 431177 Selected: 4

1. [Long term outcomes of aortic root replacement](#)  
Bang JH, Im YM, Kim JB, Choo SJ, Chung CH  
Korean J Thorac Cardiovasc Surg. 2013 Apr;46(2):104-110. doi: 10.5090/kjtcs.2013.46.2.104. Epub 2013 Apr 9.  
PMID: 23614095 [PubMed - in process]

2. [Deletion of aldose reductase from mice inhibits capillary degeneration and superoxide generation](#)  
Tang J, Du Y, Petrash JM, Sheibani N, Kern T  
PLoS One. 2013 Apr 16;8(4):e62081. doi: 10.1371/journal.pone.0062081. Epub 2013 Apr 16.  
PMID: 23614016 [PubMed - in process]

3. [Co-Culture of Neural Crest Stem Cells \(NCSC\) and Insulin Producing Beta-TC6 Cells Results in Cadherin Junctions and Protection against Cytokine-Induced Beta-Cell Death.](#)

diabetes type 2

diabetes insipidus

Titles with your search

100%

Choose Destination

- File
- Clipboard
- Collections
- E-mail
- Order
- My Bibliography
- Citation manager

Download 4 items.

Format

**MEDLINE**

Sort by

Recently Added

Create File

روش دوم: وارد کردن منابع از طریق پایگاه های اطلاعاتی

PubMed

File Edit References Groups Tools Window Help

Quick Search

	Year	Title	Journal	Ref Type	URL
n, E. ...	2006	Multiple sclerosis--the plaque and its ...	N Engl J Med	Journal Arti...	<a href="http://www.ncbi.nlm...">http://www.ncbi.nlm...</a>
U. ...	2009	A call to incorporate the prevention a...	Diabetes &...	Journal Arti...	<a href="http://www.science...">http://www.science...</a>
U. ...	2009	A call to incorporate the prevention a...	Diabetes &...	Journal Arti...	<a href="http://www.science...">http://www.science...</a>
U. ...	2009	A call to incorporate the prevention a...	Diabetes &...	Journal Arti...	<a href="http://www.science...">http://www.science...</a>
U. ...	2009	A call to incorporate the prevention a...	Diabetes &...	Journal Arti...	<a href="http://www.science...">http://www.science...</a>
		whole blood immunoassay for the i...	J Interferon ...	Journal Arti...	<a href="http://www.ncbi.nlm...">http://www.ncbi.nlm...</a>
		eciGen		Book	<a href="http://books.google...">http://books.google...</a>
en, P....	2008	Neutralizing antibodies against interf...	Ther Adv N...	Journal Arti...	<a href="http://www.ncbi.nlm...">http://www.ncbi.nlm...</a>
ddin...	2011	Combination therapy of Avonex and ...	2	Journal Arti...	<a href="http://www.zjrms.ir/...">http://www.zjrms.ir/...</a>
Shi...	2013	Association between Myocardial Trig...	PLoS One	Journal Arti...	
nia, ...	2007	Multiple sclerosis in Isfahan, Iran	Int Rev Neu...	Journal Arti...	<a href="http://www.ncbi.nlm...">http://www.ncbi.nlm...</a>

Import

- File...
- Folder...

Print... Ctrl+P

Print Preview

Print Setup...

Compressed Library (.enx) ...

Exit Ctrl+Q

Preview Search PDF &amp; Quick Edit

[1] Frohman EM, Racke MK, Raine CS. Multiple sclerosis--the plaque and its pathogenesis. N Engl J Med. 2006 Mar 2;354(9):942-55.



- My Library
  - All References (40)
  - Unfiled (40)
  - Trash (0)
- My Groups
- Online Search
  - Library of Congr... (0)
  - LISTA (EBSCO) (0)
  - PubMed (NLM) (0)
  - Web of Science ... (0)
- EndNote Web
- Find Full Text

Author	Year	Title	Journal	Ref Type	URL
Frohman, E. ...	2006	Multiple sclerosis—the plaque and its ...	N Engl J Med	Journal Arti...	http://www.ncbi.nlm...
Vischer, U. ...	2009	A call to incorporate the prevention a...	Diabetes &...	Journal Arti...	http://www.science...
Vischer, U. ...	2009	A call to incorporate the prevention a...	Diabetes &...	Journal Arti...	http://www.science...
Vischer, U. ...	2009	A call to incorporate the prevention a...	Diabetes &...	Journal Arti...	http://www.science...
Vischer, U. ...				Journal Arti...	http://www.science...
Vischer, U. ...				Journal Arti...	http://www.science...
Towbin, K. ...				Journal Arti...	http://www.ncbi.nlm...
Surhone, P. ...				Book	http://books.google...
Sorensen, J. ...				Journal Arti...	http://www.ncbi.nlm...
Sharafat, M. ...				Journal Arti...	http://www.zjrms.ir/...
Sai, E.; S. ...				Journal Arti...	
Saadatn...				Journal Arti...	http://www.ncbi.nlm...

Import File

Import File:  Choose...

Import Option: EndNote Library

Duplicates: Import All

Text Translation: No Translation

Import Cancel

Preview Search

[1] Frohman EM, Racke MK, Raine CS. Multiple sclerosis—the plaque and its pathogenesis. N Engl J Med. 2006 Mar 2;354(9):942-55.

EndNote X5 - [My EndNote Library]

File Edit References Groups Tools Window Help

Koomesh Quick Search

My Library

- All References (40)
- Unfiled (40)
- Trash (0)
- My Groups
- Online Search
  - Library of Congr... (0)
  - LISTA (EBSCO) (0)
  - PubMed (NLM) (0)
  - Web of Science ... (0)
  - more...
- EndNote Web transfer...
- Find Full Text

Author	Year	Title	Journal	Ref Type	URL
Frohman, E. ...	2006	Multiple sclerosis--the plaque and its ...	N Engl J Med	Journal Arti...	http://www.ncbi.nlm...
Vischer, U. ...	2009	A call to incorporate the prevention a...	Diabetes &...	Journal Arti...	http://www.science...
Vischer, U. ...	2009	A call to incorporate the prevention a...	Diabetes &...	Journal Arti...	http://www.science...
Vischer, U. ...	2009	A call to incorporate the prevention a...	Diabetes &...	Journal Arti...	http://www.science...
Vischer, U. ...	2009	A call to incorporate the prevention a...	Diabetes &...	Journal Arti...	http://www.science...
Vischer, U. ...	2009	A call to incorporate the prevention a...	Diabetes &...	Journal Arti...	http://www.science...
Towbin, K. ...				Book	http://books.google...
Surhone, P. ...				Journal Arti...	http://www.ncbi.nlm...
Sorensen, K. ...				Journal Arti...	http://www.ncbi.nlm...
Sharafat, M. ...				Journal Arti...	http://www.zjrms.ir/...
Sai, E.; S. ...				Journal Arti...	
Saadatn...				Journal Arti...	http://www.ncbi.nlm...

Import File

Import File: pubmed\_result.txt Choose...

Import Option: EndNote Library

- PDF
- EndNote Library
- EndNote Import
- Refer/BibIX
- Tab Delimited
- Reference Manager (RIS)
- ISI-CE
- Multi-Filter (Special)
- EndNote generated XML
- Other Filters...**
- ABC-CLIO
- PubMed (NLM)
- Use Connection File...

Duplicates:

Text Translation:

Preview Search

[1] Frohman EM, Racke MK, Raines EW. Pathogenesis of multiple sclerosis. N Engl J Med. 2006 Mar 2;354(9):942-55.

Showing 40 of 40 references.

Hide Tab Par

- Library
- References (40)
- Unfiled (0)
- Trash (0)
- Groups
- Online Search
- Library of Congr... (0)
- LISTA (EBSCO) (0)
- PubMed (NLM) (0)
- Web of Science ... (0)
- more...

- Author
- Frohman
- Vischer,
- Vischer,
- Vischer,
- Vischer,
- Vischer,
- Towbin,
- Surhone
- Sorensen
- Sharafat
- Sai, E.; S
- Saadatn

Preview Search

[1] Frohman  
2;354(9):94

### Choose An Import Filter

Name	Information Provider
PsycINFO (DS)	DataStar
PsycINFO (EBSCO)	EBSCO
PsycINFO (OCLC)	OCLC
PsycINFO (OvidSP)	OvidSP
PSYINDEXplus Lit AV (OvidSP)	OvidSP
PSYINDEXplus Tests (OvidSP)	OvidSP
<b>PubMed (NLM)</b>	<b>National Library of Medicine</b>
PubMed Central (NLM)	National Library of Medicine
QPAT	Questel
ReadersGuideAbs (OCLC)	OCLC
ReferBibIX	Generic
Reference Update (TS)	Thomson Reuters
RefMan DTC	Generic

Quick Search  Find by

Less Info:

File Name: PubMed (NLM).enf  
 Created: Thursday, April 25, 2013, 4:19:41 PM  
 Modified: Tuesday, February 15, 2011, 4:44:44 PM  
 Based On:  
 Category: National Library of Medicine  
 Comments: **DOWNLOAD INSTRUCTIONS**  
 1. Go to the PubMed website in your web

Showing 493 of 493 import filters.

Ref Type	URL
Med Journal Arti...	http://www.ncbi.nlm...
&... Journal Arti...	http://www.science...
&... Journal Arti...	http://www.science...
&... Journal Arti...	http://www.science...
&... Journal Arti...	http://www.science...
&... Journal Arti...	http://www.science...
on ... Journal Arti...	http://www.ncbi.nlm...
Book	http://books.google...
N... Journal Arti...	http://www.ncbi.nlm...
Journal Arti...	http://www.zjrms.ir/...
Journal Arti...	http://www.ncbi.nlm...
eu... Journal Arti...	http://www.ncbi.nlm...

pathogenesis. N Engl J Med. 2006 Mar

روش دوم: وارد کردن منابع از طریق پایگاه های اطلاعاتی

534,035 articles found for: ALL(diabetes)

Save this search | Save as search alert | RSS Feed

Font Size: A<sup>+</sup> A<sup>-</sup>

= Full-text available  = Abstract only

Go to page: 1 of 21362 Go | Next >

Search within results

Search

Refine results

Limit to Exclude

Content Type

Journal (508,591)

Book (31,844)

Reference Work (3,533)

Journal/Book Title

The Lancet (17,462)

Journal of the American College of Cardiology (12,892)

- Purchase | E-mail articles | **Export citations** | Open all previews
- Sort by: Relevance | Date
- A call to incorporate the prevention and treatment of geriatric disorders in the management of diabetes in the elderly** Review Article  
*Diabetes & Metabolism, Volume 35, Issue 3, June 2009, Pages 168-177*  
U.-M. Vischer, B. Bauduceau, I. Bourdel-Marchasson, J.-F. Blickle, T. Constans, A. Fagot-Campagna, E. Kaloustian, V. Lassman-Vague, P. Lecomte, D. Simon, D. Tessier, C. Verny, J. Doucet, For The Alfediam/SFGG French-speaking group for study of diabetes in the elderly  
Show preview | Related articles | Related reference work articles
  - Diabetes Nutrition and Complications Trial: adherence to the ADA nutritional recommendations, targets of metabolic control, and onset of diabetes complications. A 7-year, prospective, population-based, observational multicenter study** Original Research Article  
*Journal of Diabetes and its Complications, Volume 20, Issue 6, November-December 2006, Pages 361-366*  
The Diabetes and Nutrition Study Group of the Spanish Diabetes Association (GSEDNu)  
Show preview | Related articles | Related reference work articles
  - Report of the Committee on the classification and diagnostic criteria of diabetes mellitus**  
*Diabetes Research and Clinical Practice, Volume 55, Issue 1, January 2002, Pages 65-85*  
The Committee of the Japan Diabetes Society on the diagnostic criteria of diabetes mellitus, Takeshi Kuzuya, Shoichi

ScienceDirect

http://www.sciencedirect.com/science?\_ob=DownloadURL&\_method=confirm&searchtype=a&refSource=search&\_st=13&co

ScienceDirect - Export Docu... x

SciVerse ScienceDirect

Hub | ScienceDirect | Scopus | Applications

Register | Login | Go to SciV

You have **Guest** access to ScienceDirect. Find out more..

Home | Publications | Search | My settings | My alerts | Shopping cart Help

All fields: diabetes Author: Journal/Book title: Volume: Issue: Page: Search

### Export citations

To export the 2 selected citation + links, select your preferred formats and click Export.

Content format:

- Citations Only
- Citations and Abstracts

Export format:

- RIS format (for Reference Manager, ProCite, EndNote)
- RefWorks Direct Export [? About Refworks](#)
- Plain text format
- BibTeX format

**Export** | Cancel

100%

روش دوم: وارد کردن منابع از طریق پایگاه های اطلاعاتی

ScienceDirect

روش دوم: وارد کردن منابع از طریق پایگاه های اطلاعاتی

All Databases

Results Topic=(diabetes)  
Timespan=All Years.  
Search language=English

Scientific WebPlus<sup>BETA</sup> View Web Results >>

Results: Approximately 935,221 [ ? ]

Page 1 of 10,000 Go

Sort by: Publication Date -- newest to oldest

Save to: ENDNOTE<sup>®</sup> WEB | **ENDNOTE<sup>®</sup>** | I Wrote These Publications | more options

Citation Report feature not available. [?]

Hide Refine

**Refine Results**

Search within results for

Search

Databases

Research Domains Refine

- SCIENCE TECHNOLOGY
- SOCIAL SCIENCES
- ARTS HUMANITIES

Research Areas Refine

- ENDOCRINOLOGY METABOLISM
- BIOCHEMISTRY MOLECULAR BIOLOGY
- CARDIOVASCULAR SYSTEM CARDIOLOGY

- 1. Title: **Long-Term Renal Function Outcomes in Bladder Cancer After Radical Cystectomy**  
Author(s): Osawa, Takahiro; Shinohara, Nobuo; Maruyama, Satoru; et al.  
Source: UROLOGY JOURNAL Volume: 10 Issue: 1 Pages: 784-789 Published: WIN 2013  
Times Cited: 0 (from All Databases)  
[ View abstract ]
- 2. Title: **Periodontal disease as a potential risk factor for the development of diabetes in women with a prior history of gestational diabetes mellitus**  
Author(s): Xiong, Xu; Elkind-Hirsch, Karen E.; Xie, Yiqiong; et al.  
Source: JOURNAL OF PUBLIC HEALTH DENTISTRY Volume: 73 Issue: 1 Pages: 41-49 DOI: 10.1111/jphd.12004 Published: WIN 2013  
Times Cited: 0 (from All Databases)  
[ Full Text ] [ View abstract ]
- 3. Title: **The Role of Insulin-Like Growth Factor I and Hypoxia Inducible Factor Ia in Vascular Endothelial Growth Factor Expression in Type 2 Diabetes**  
Author(s): Jiang, Fang; Tang, Yue-Ting; Guo, Li; et al.  
Source: ANNALS OF CLINICAL AND LABORATORY SCIENCE Volume: 43 Issue: 1 Pages: 37-44 Published: WIN 2013  
Times Cited: 0 (from All Databases)  
[ View abstract ]

Web Of Knowledge

http://apps.webofknowledge.com/OutboundService.do?action=go

Web of Knowledge [5.9] - E... x

WEB OF KNOWLEDGE<sup>SM</sup> | DISCOVERY STARTS HERE

THOMSON REUTERS

Log Out | Help

### Processing Records

Please wait while your request is processed.  
(Note: Depending on the number of records, this may take a few moments.)

Product: Web of Knowledge  
Selected action: Export to Reference Software  
Processing 2 records:  
2...Done.

**Export** If the "Export" process does not start automatically, then click "Export."

**Back to Results** When you are done exporting the file, click "Back to Results. "

© 2012 Thomson Reuters | [Terms of Use](#) | [Privacy Policy](#) | *Please give us your feedback on using Web of Knowledge.*

Do you want to open or save savedrecs.ciw from ets.webofknowledge.com? Open Save Cancel x

100%

روش دوم: وارد کردن منابع از طریق پایگاه های اطلاعاتی

Web Of Knowledge

# روش‌های ورود منابع به برنامه

## روش سوم: وارد کردن منابع از طریق Google Scholar

barev39@gmail.com

My Citations Metrics Alerts Settings

Google scholar

Articles  include patents  Legal documents

**Bibliography manager**

Don't show any citation import links.

Show links to import citations into

- BibTeX
- EndNote**
- RefMan
- RefWorks

**Save** Cancel

To retain settings, you must turn on cookies

- وارد صفحه اصلی سایت گوگل و از منوی More، وارد بخش Scholar شوید.

- سپس روی گزینه Setting کلیک کنید تا وارد صفحه تنظیمات شوید.

- در پایین صفحه تنظیمات و در قسمت Bibliography Manager/ Show links to import citation into/ endnote را انتخاب کرده و سپس بر روی دکمه Save کلیک کنید



## روش‌های ورود منابع به برنامه

- Google سپس وارد صفحه اصلی شوید و عنوان خود را Scholar جستجو کنید. همانطور که در شکل می‌بینید به هر یک از Import to EndNote ر کوردها، گزینه اضافه شده است.
- با کلیک کردن بر روی این لینک می‌توانید منبع مورد نظر را ذخیره یا باز نمایید که در صورت باز کردن، وارد برنامه می‌شود.

2 results (0.05 sec)

### [The Effect of an Acute Aerobic Bout on Time Course Alterations of Visceral Adipose Tissue C](#) [Expression in Diabetic Rats](#)

M Alinejad, R Fathi, V Minasiyan... - Iranian Journal of ..., 2012 - jm.um.ac.ir

... Diabetic Rats **Mohamad Alinejad** 1, Rozita Fathi<sup>1\*</sup>, Vazgan Minasiyan 2, Elahe Talebi Garakani 1, Alireza Safarzade 1 1 ... or both. **Visfatin** is a recently discovered protein that is expressed and secreted in visceral fat tissue. Elevated ...

[Import into EndNote](#) [More ▾](#)

### [Acute-phase proteins and other systemic responses to inflammation](#)

FH Epstein, C Gabay, I Kushner - New England Journal of ..., 1999 - Mass Medical Soc

Review Article from The New England Journal of Medicine — Acute-Phase Proteins and Other Systemic Responses to Inflammation.

Cited by 3250 [Related articles](#) [BL Direct](#) [All 14 versions](#) [Import into EndNote](#) [More ▾](#)

Create alert

[About Google Scholar](#)

[All About Google](#)

[Privacy & Terms](#)

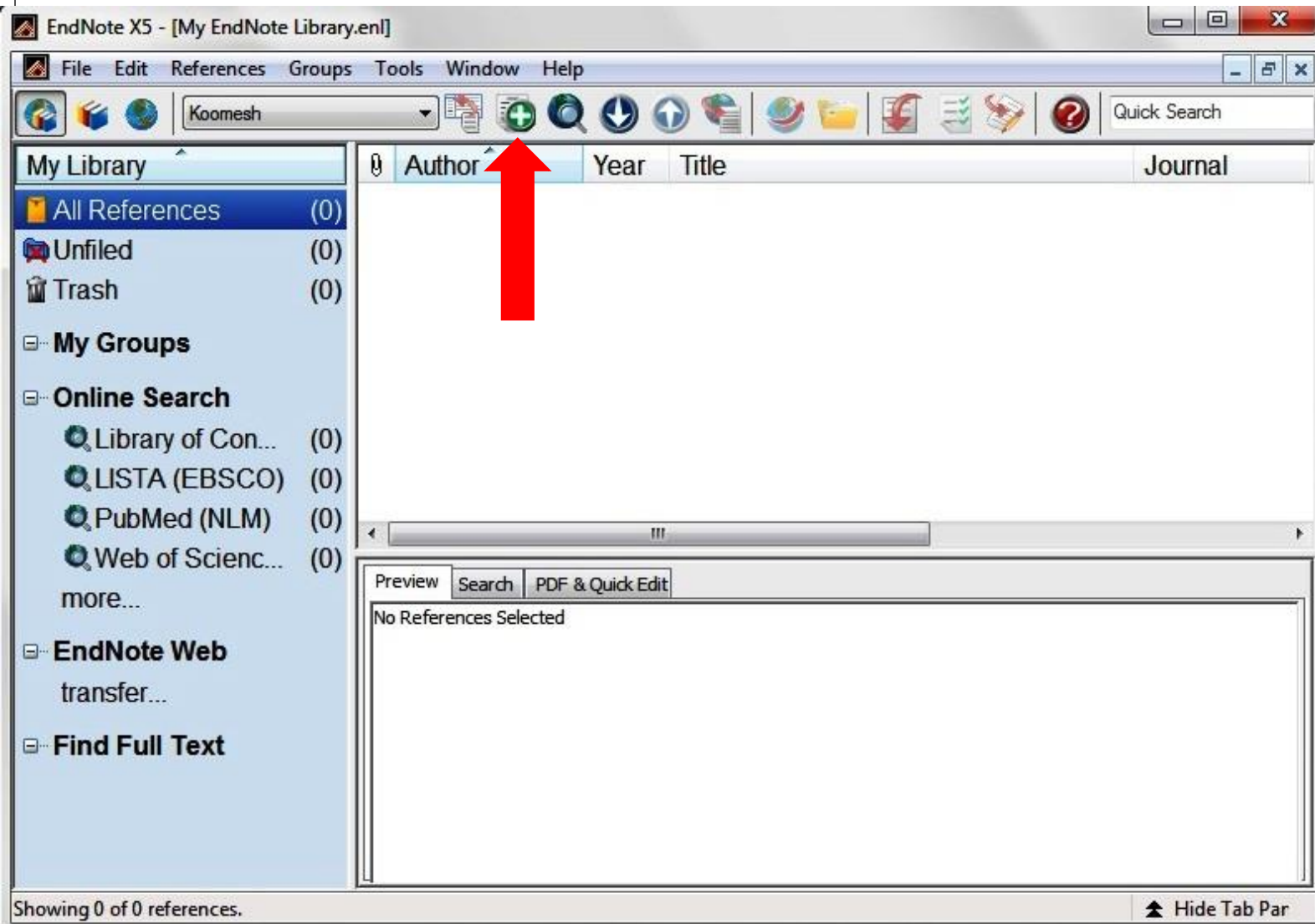
[Give us feedback](#)

# روش‌های ورود منابع به برنامه

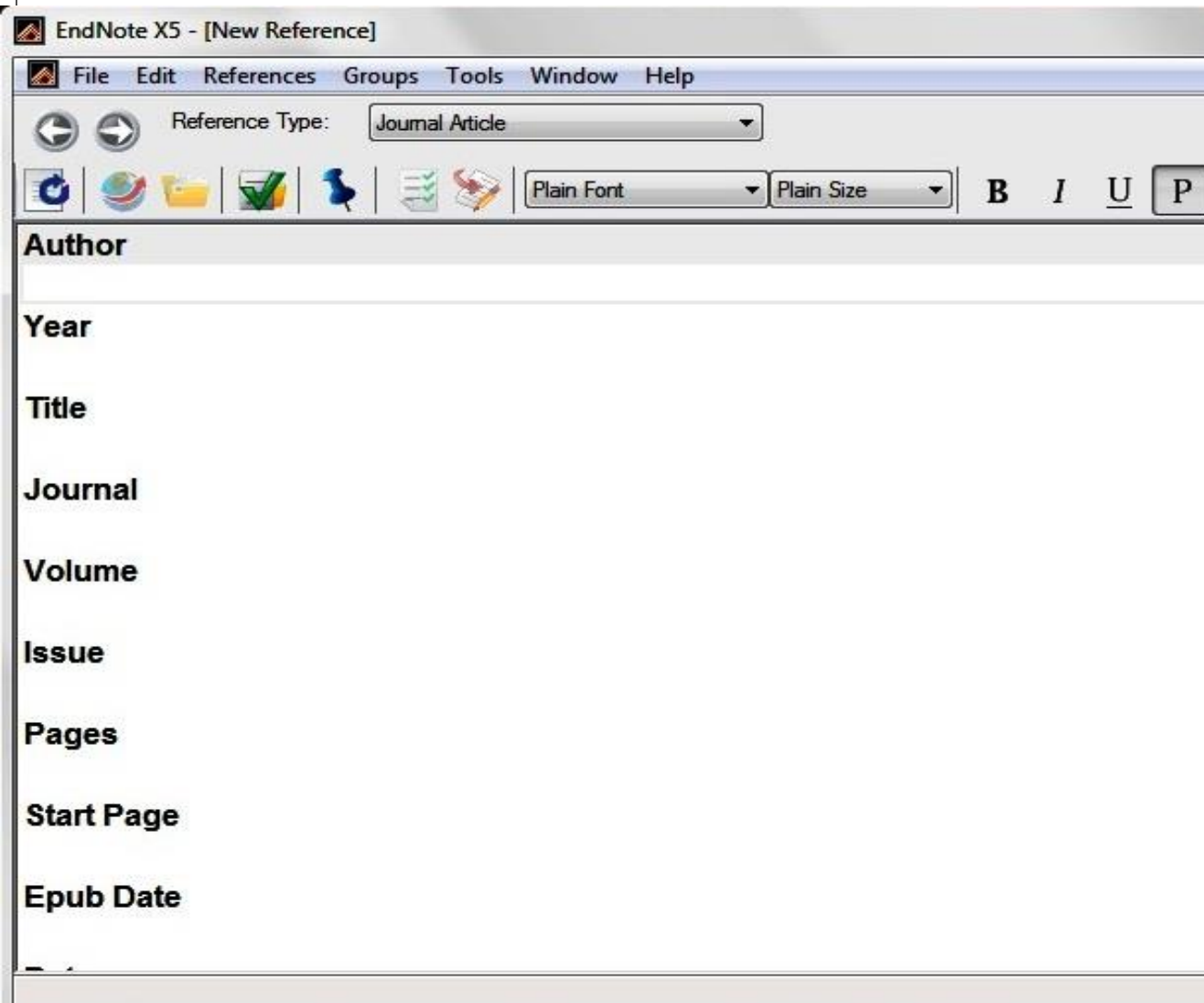
## روش چهارم: تایپ دستی منابع

- در پنجره باز شده بر روی علامت اضافه کردن (علامت +) کلیک کنید تا بتوانید منبع جدیدی را به کتابخانه خود اضافه کنید.

- همچنین می‌توانید با انتخاب گزینه **References/ New** از منوی بالای صفحه وارد صفحه ورود دستی منابع شوید



# روش‌های ورود منابع به برنامه



- در پنجره بازشده، بخش‌های مختلف منابع باید به صورت دستی وارد شوند. ابتدا باید در قسمت **Reference Type** نوع منبع خود را مشخص نمایید. یعنی منبع شما کتاب، مجله، پایان نامه و... است.

- همچنین می‌توانید فایل کامل مقاله و یا فایل‌های تصویری را به آن اضافه نمایید. این کار را می‌توان با انجام کلیک راست بر روی صفحه و انتخاب گزینه **File Attachment/ Attach File** و یا انتخاب گزینه **Figure/ Attach Figure** انجام داد.



Reference Type:

Journal Article



Plain Font

Plain Size

**B***I*U**P**A<sup>1</sup>A<sub>1</sub>

Σ

**Author**

Year

Title

Journal

Volume

Issue

Pages

Start Page

به سه صورت می توان نوشت:

1. Last name, First name
  - Example: Smith, John
2. First name Last Name (no comma)
  - Example: John Smith

توجه: در صورت وجود چند نویسنده، نام هر یک را در یک سطر جدا می نویسیم.

\* در صورتی که نام نویسندگان دیگر مقاله در دسترس نبود، در یک سطر جدا واژه "et al." را می نویسیم.



Reference Type:

Journal Article



Plain Font

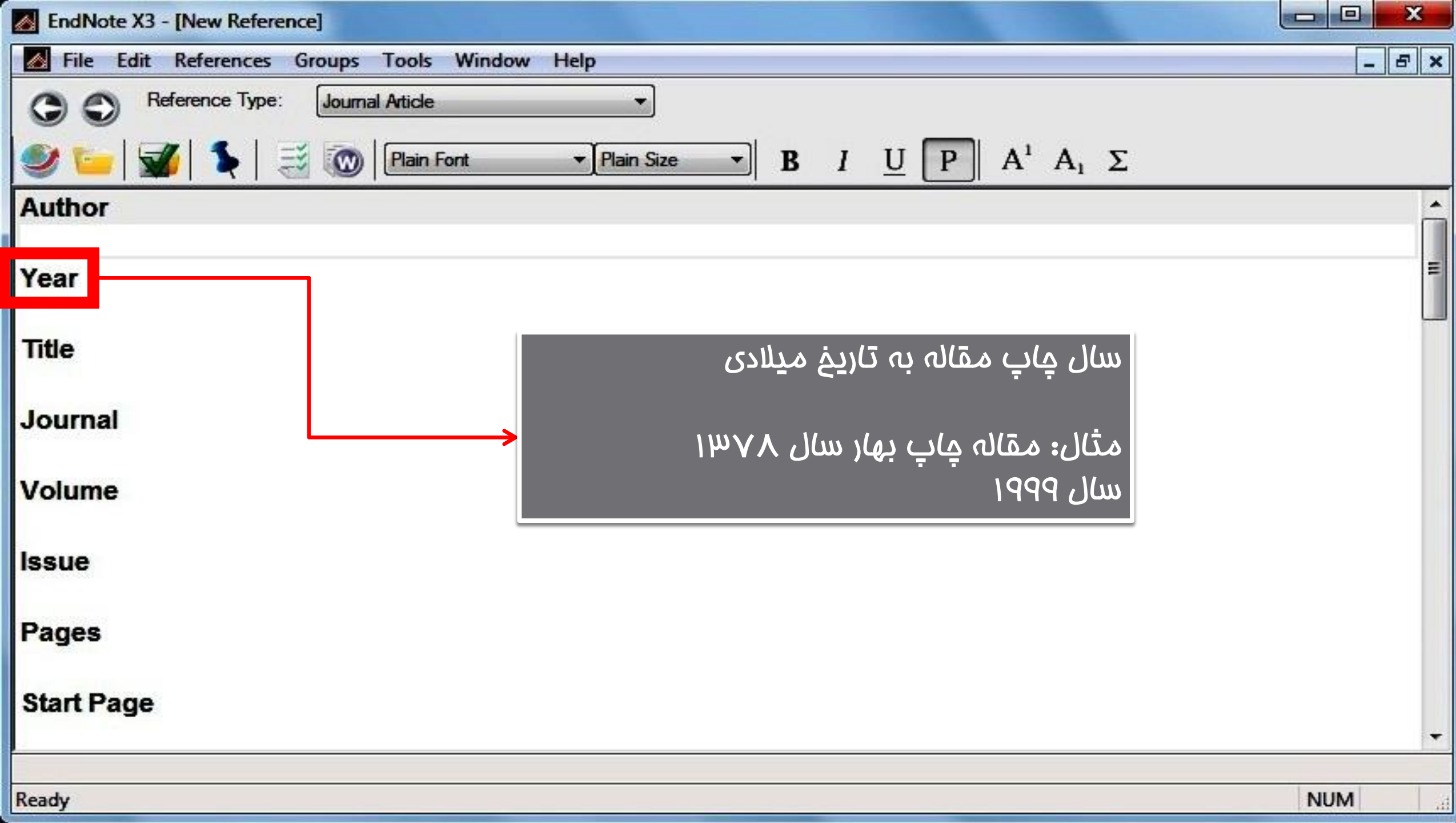
Plain Size

**B***I*U**P**A<sup>1</sup>A<sub>1</sub>

Σ

**Author****Year****Title****Journal****Volume****Issue****Pages****Start Page**

\*اگر نویسندگان مشترکی از یک مرکز یا سازمان خاصی  
بودند به روش زیر اسم نویسنده را وارد می کنیم:  
National Heart Lung and Blood Institute,



Reference Type: Journal Article

Plain Font Plain Size B I U P A<sup>1</sup> A<sub>1</sub> Σ

Author

Year

Title

Journal

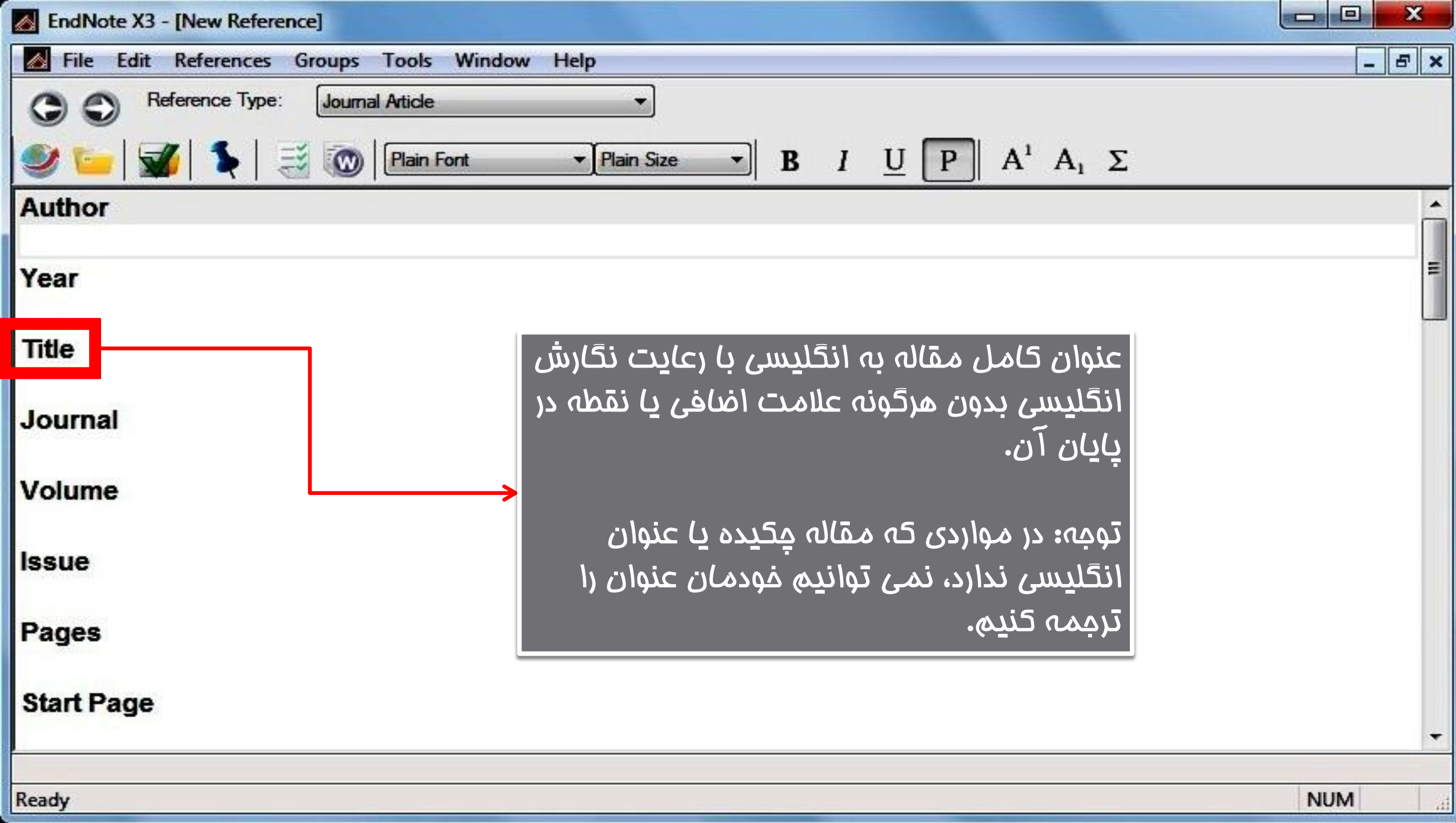
Volume

Issue

Pages

Start Page

سال چاپ مقاله به تاریخ میلادی  
مثال: مقاله چاپ بهار سال ۱۳۷۸  
سال ۱۹۹۹



Reference Type: Journal Article

Plain Font Plain Size **B** *I* U **P** A<sup>1</sup> A<sub>1</sub> Σ

Author

Year

Title

**Journal**

Volume

Issue

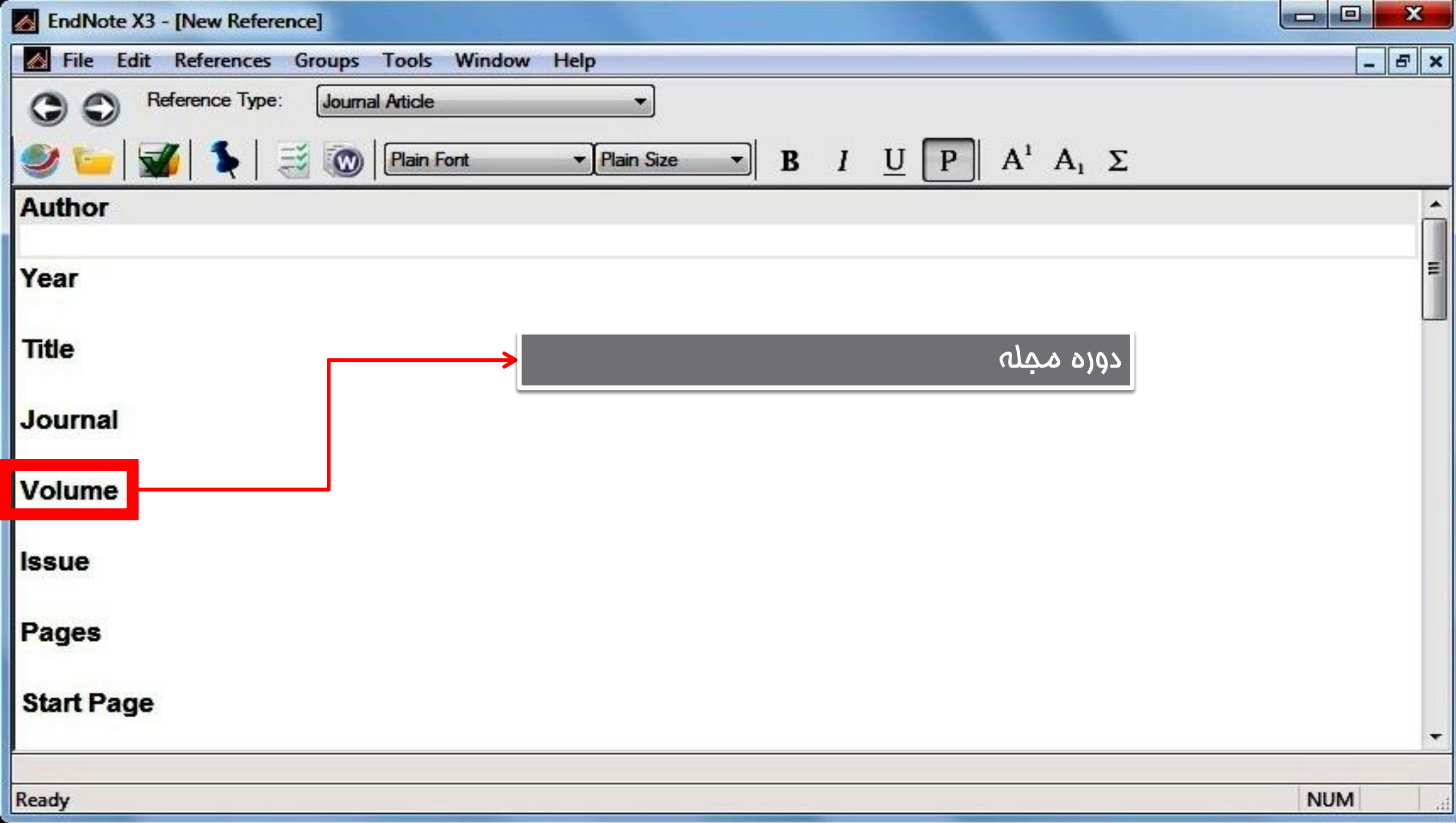
Pages

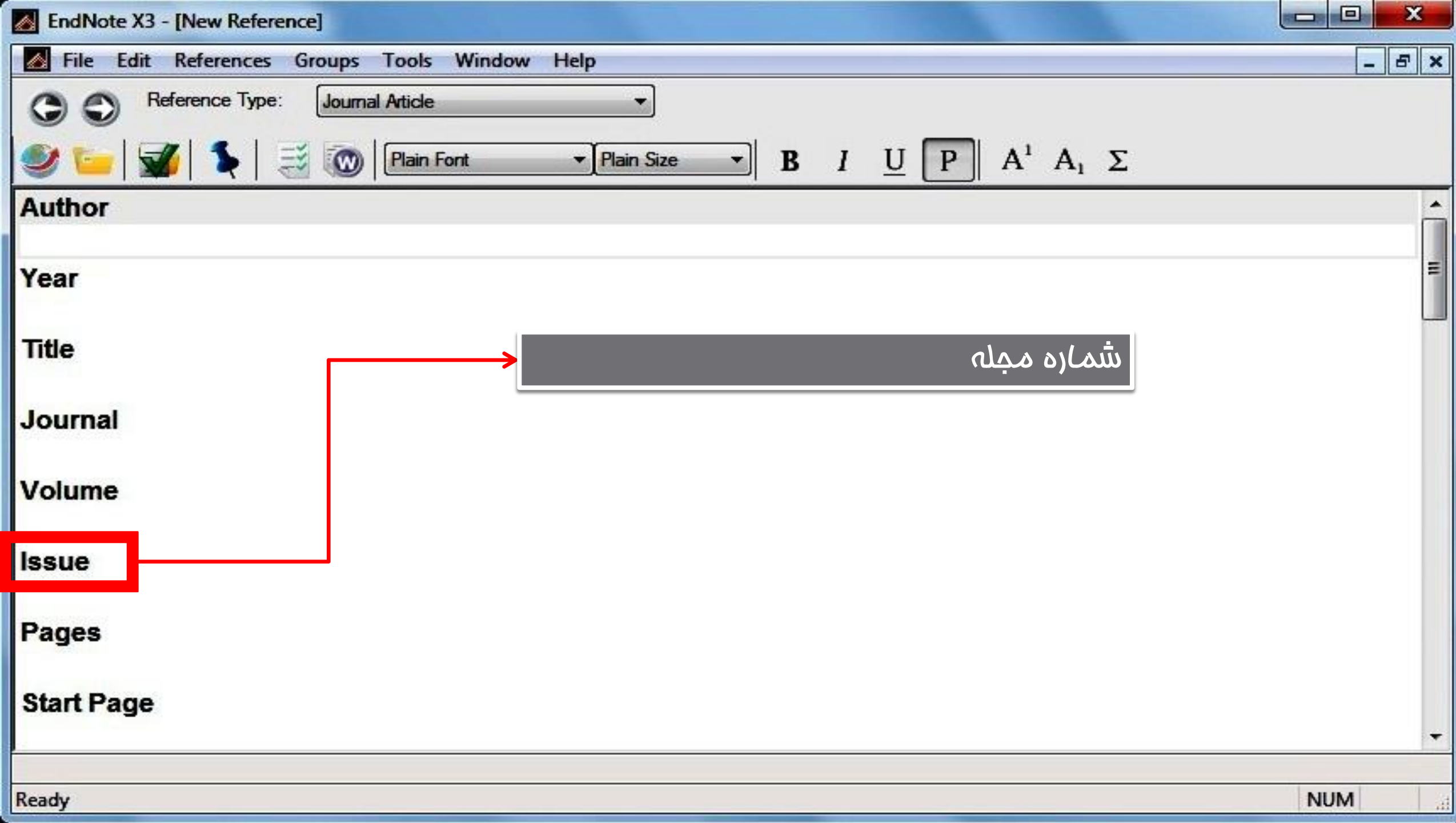
Start Page

نام کامل مجله ای که مقاله در آن به چاپ رسیده است.

با مراجعه به سایت مجلات می توان عنوان انگلیسی آنها را استخراج کرد.







Reference Type: Journal Article

Plain Font Plain Size **B** *I* U **P** A<sup>1</sup> A<sub>1</sub> Σ

Author

Year

Title

Journal

Volume

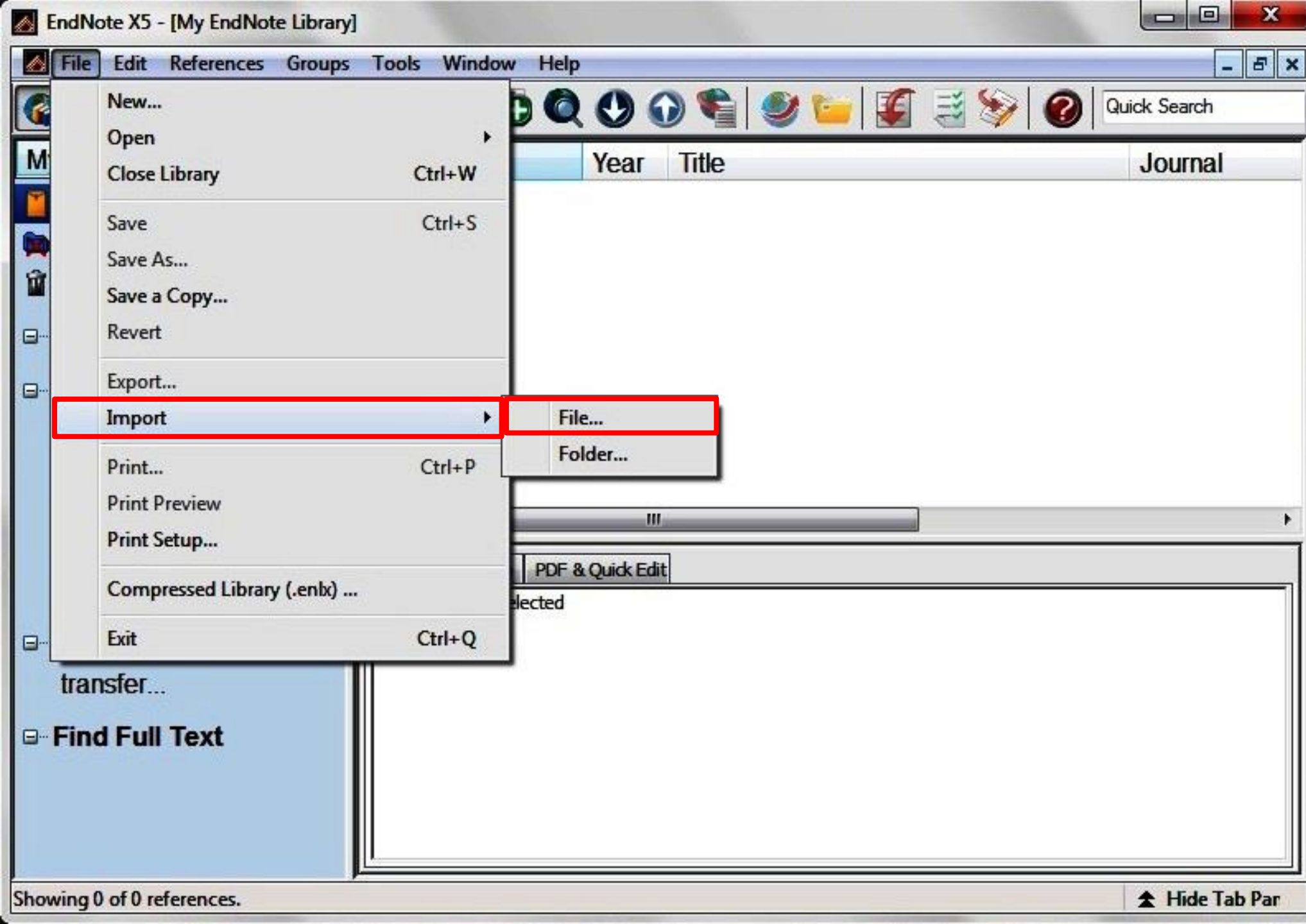
Issue

Pages

Start Page

شماره صفحاتی که مقاله در مجله مذکور چاپ شده است. به دو روش زیر:

- 263-272
- 263-72



روش پنجم: وارد کردن منابع از طریق فایل PDF

- My Library
  - All References (0)
  - Unfiled (0)
  - Trash (0)
- My Groups
- Online Search
  - Library of Con... (0)
  - LISTA (EBSCO) (0)
  - PubMed (NLM) (0)
  - Web of Scienc... (0)
  - more...
- EndNote Web transfer...
- Find Full Text

Author	Year	Title	Journal	Ref Type	UF
--------	------	-------	---------	----------	----

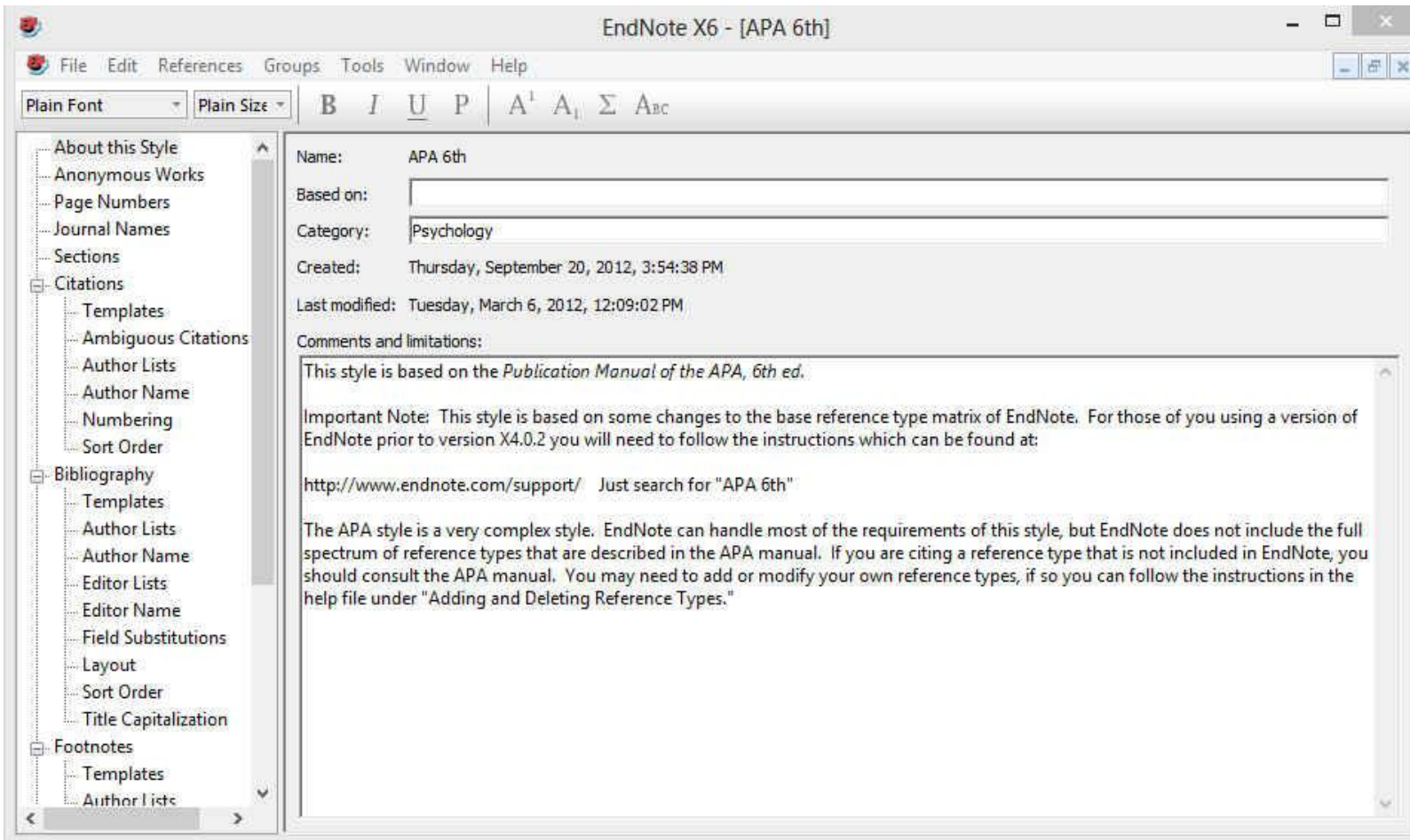
**Import File**

Import File:

Import Option:

- PDF
- EndNote Library
- EndNote Import
- Refer/BibIX
- Tab Delimited
- Reference Manager (RIS)
- ISI-CE
- Multi-Filter (Special)
- EndNote generated XML
- Other Filters...**
- ABC-CLIO
- PubMed (NLM)
- Use Connection File...**

# ایجاد یا ویرایش Style

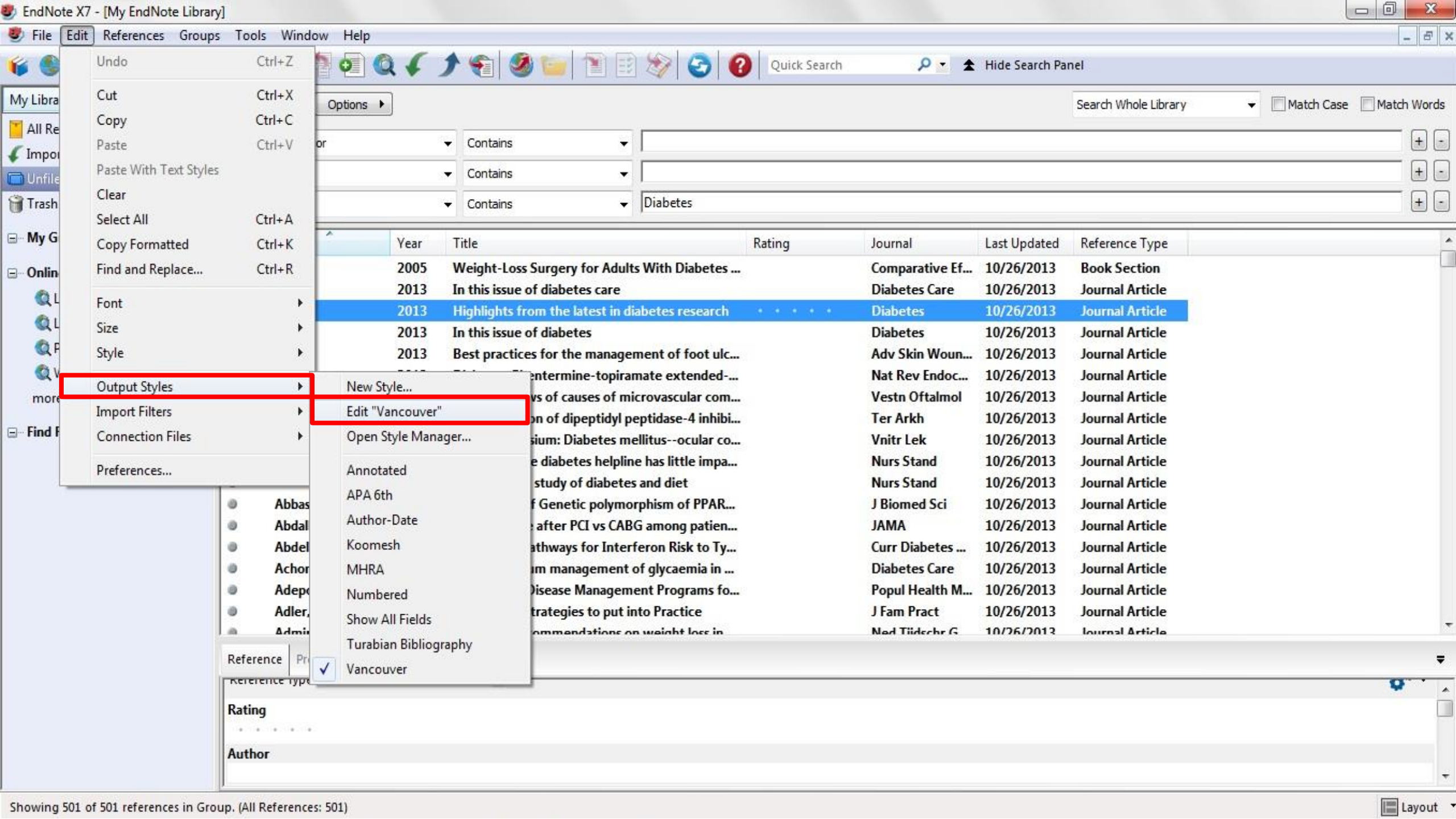


- برای ایجاد Style جدید باید منوی Edit و سپس گزینه‌های Output Style و New Style را انتخاب نمایید. این کار به لحاظ زمانبر بودن و مشکلات همراه آن توصیه نمی‌شود و بهتر است که یکی از Style‌های موجود که با سبک مورد نظر مطابقت بیشتری دارد را انتخاب و ویرایش نمایید. برای این کار از منوی Edit، Output Style، Style مورد نظر خود را انتخاب و اقدام به ویرایش آن نمایید.

# ویرایش Style

The screenshot shows the EndNote X7 interface. The title bar reads "EndNote X7 - [My EndNote Library]". The menu bar includes "File", "Edit", "References", "Groups", "Tools", "Window", and "Help". The toolbar contains various icons, and a dropdown menu is open, showing "Vancouver" selected and highlighted with a red box. Below the toolbar, the "My Library" pane on the left shows "All References (501)", "Imported References (1)", "Unfiled (501)", and "Trash (0)". The "My Groups" and "Online Search" panes are also visible. The main search area has a "Search" button and "Options" dropdown. The search criteria are set to "Search Whole Library" with checkboxes for "Match Case" and "Match Words". The search results are displayed in a table with columns: Author, Year, Title, Rating, and Journal. The following table represents the search results shown in the interface:

Author	Year	Title	Rating	Journal
	2005	Weight-Loss Surgery for Adults With Diabetes ...		Comparative
	2013	In this issue of diabetes care		Diabetes Care
	2013	Highlights from the latest in diabetes research	• • • • •	Diabetes
	2013	In this issue of diabetes		Diabetes
	2013	Best practices for the management of foot ulc...		Adv Skin Wc
	2013	Diabetes: Phentermine-topiramate extended-...		Nat Rev End
	2013	[Modern views of causes of microvascular com...		Vestn Oftaln
	2013	[A combination of dipeptidyl peptidase-4 inhibi...		Ter Arkh
	2013	[13th Symposium: Diabetes mellitus--ocular co...		Vnitř Lek
	2013	Practice nurse diabetes helpline has little impa...		Nurs Stand



- Undo Ctrl+Z
- Cut Ctrl+X
- Copy Ctrl+C
- Paste Ctrl+V
- Paste With Text Styles
- Clear
- Select All Ctrl+A
- Copy Formatted Ctrl+K
- Find and Replace... Ctrl+R
- Font
- Size
- Style
- Output Styles**
- Import Filters
- Connection Files
- Preferences...

Options

Quick Search

Search Whole Library

Match Case Match Words

or Contains

Contains

Contains Diabetes

Year	Title	Rating	Journal	Last Updated	Reference Type
2005	Weight-Loss Surgery for Adults With Diabetes ...		Comparative Ef...	10/26/2013	Book Section
2013	In this issue of diabetes care		Diabetes Care	10/26/2013	Journal Article
2013	Highlights from the latest in diabetes research	.....	Diabetes	10/26/2013	Journal Article
2013	In this issue of diabetes		Diabetes	10/26/2013	Journal Article
2013	Best practices for the management of foot ulc...		Adv Skin Woun...	10/26/2013	Journal Article
	entetermine-topiramate extended-...		Nat Rev Endoc...	10/26/2013	Journal Article
	vs of causes of microvascular com...		Vestn Oftalmol	10/26/2013	Journal Article
	on of dipeptidyl peptidase-4 inhibi...		Ter Arkh	10/26/2013	Journal Article
	sium: Diabetes mellitus--ocular co...		Vnitr Lek	10/26/2013	Journal Article
	e diabetes helpline has little impa...		Nurs Stand	10/26/2013	Journal Article
	study of diabetes and diet		Nurs Stand	10/26/2013	Journal Article
	f Genetic polymorphism of PPAR...		J Biomed Sci	10/26/2013	Journal Article
	after PCI vs CABG among patien...		JAMA	10/26/2013	Journal Article
	pathways for Interferon Risk to Ty...		Curr Diabetes ...	10/26/2013	Journal Article
	m management of glycaemia in ...		Diabetes Care	10/26/2013	Journal Article
	Disease Management Programs fo...		Popul Health M...	10/26/2013	Journal Article
	strategies to put into Practice		J Fam Pract	10/26/2013	Journal Article
	ommendations on weight loss in		Med Tijdschr G	10/26/2013	Journal Article

- New Style...
- Edit "Vancouver"**
- Open Style Manager...
- Annotated
- APA 6th
- Author-Date
- Koomesh
- MHRA
- Numbered
- Show All Fields
- Turabian Bibliography
- Vancouver



- About this Style
- Punctuation
- Anonymous Works
- Page Numbers
- Journal Names
- Sections
- Citations**
  - Templates**
  - Ambiguous Citations
  - Author Lists
  - Author Name
  - Numbering
  - Sort Order
- Bibliography
  - Templates
  - Field Substitutions
  - Layout
  - Sort Order
  - Categories
  - Author Lists
  - Author Name
  - Editor Lists
  - Editor Name
  - Title Capitalization
- Footnotes
  - Templates
  - Field Substitutions
  - Repeated Citations
  - Author Lists
  - Author Name
  - Editor Lists
  - Editor Name
  - Title Capitalization
- Figures & Tables
  - Figures
  - Tables

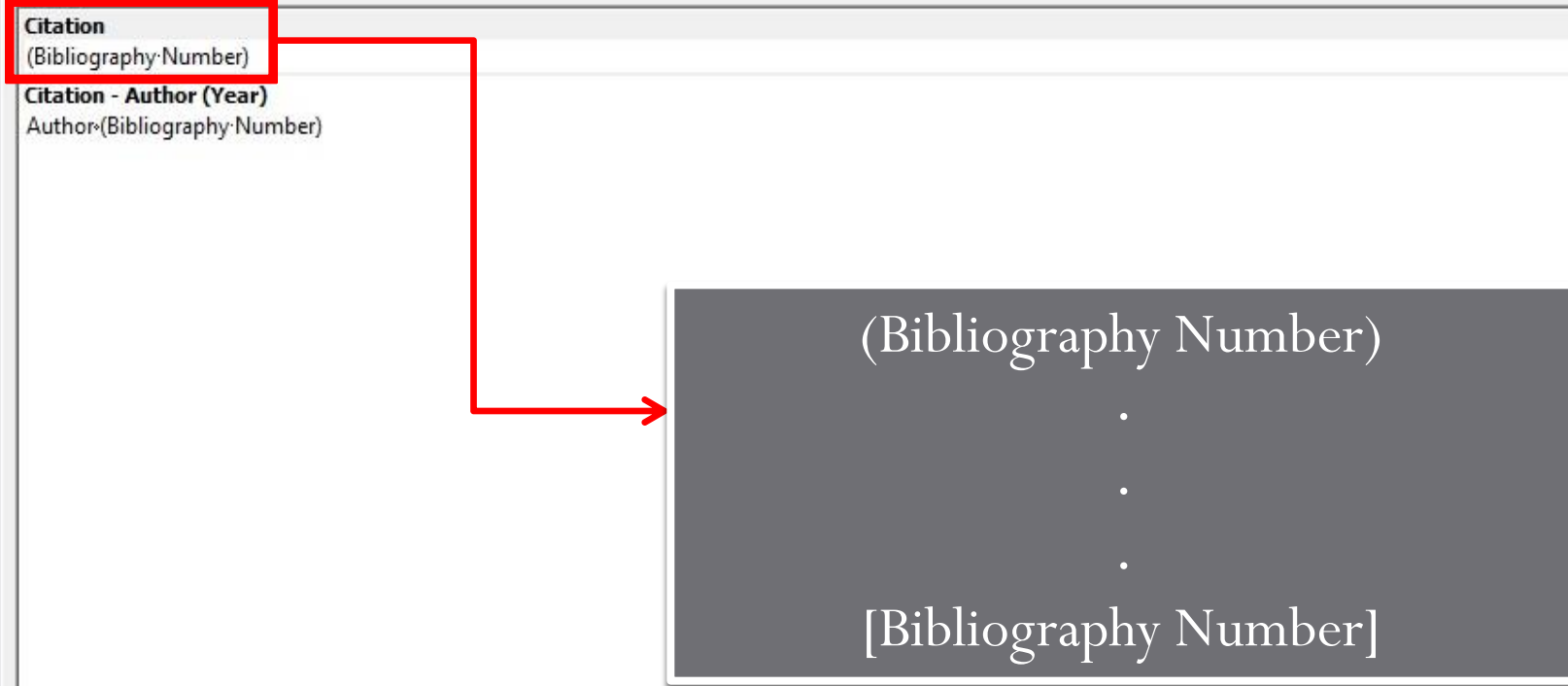
In-Text Citations

In-Text Citation Template

Insert Field ▾

**Citation**  
(Bibliography: Number)

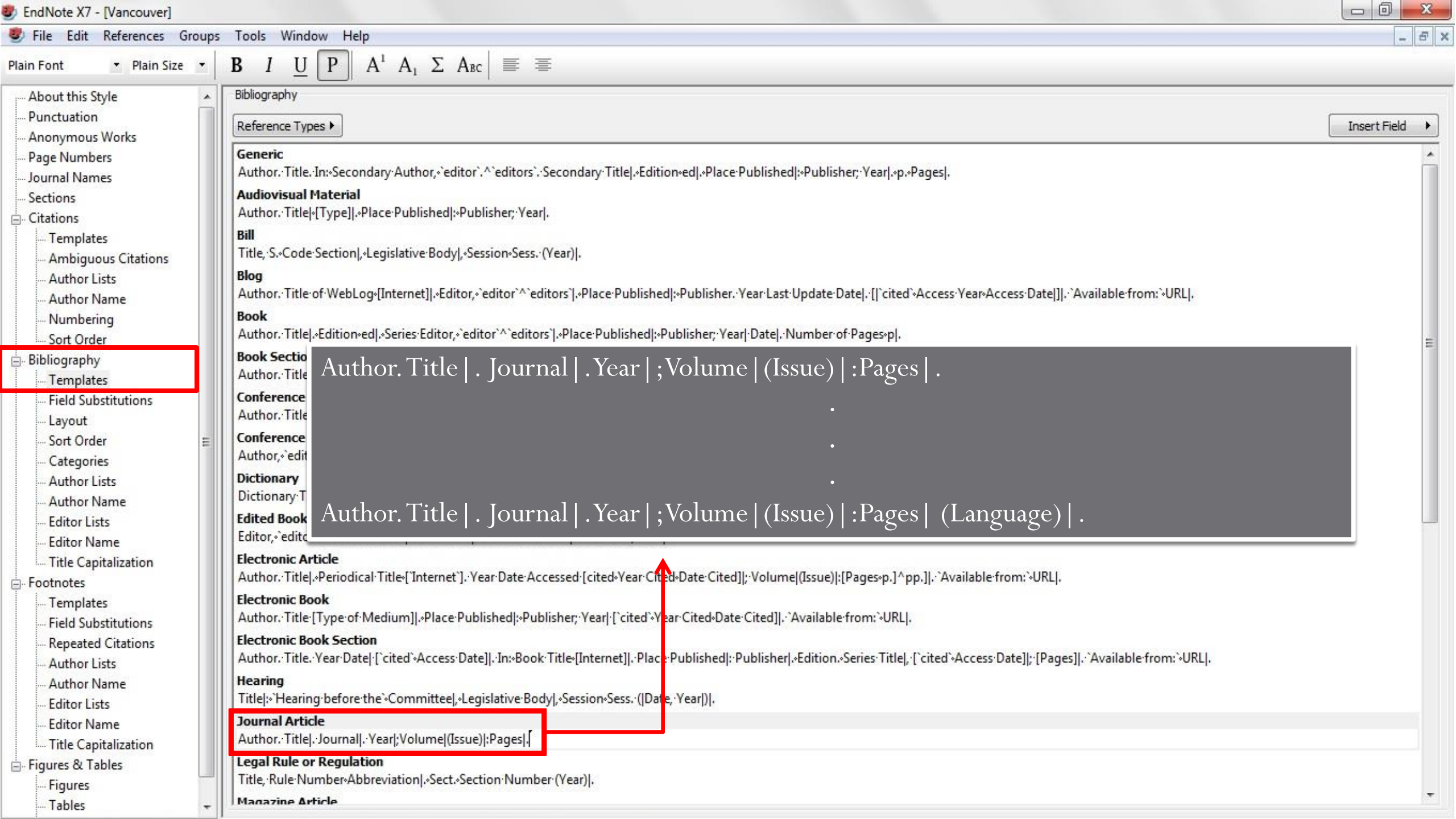
**Citation - Author (Year)**  
Author <(Bibliography: Number)>



Multiple citation separator: ,

Year Format

Use 2-digit years ('99)



- About this Style
- Punctuation
- Anonymous Works
- Page Numbers
- Journal Names
- Sections
- Citations
  - Templates
  - Ambiguous Citations
  - Author Lists
  - Author Name
  - Numbering
  - Sort Order
- Bibliography**
  - Templates
  - Field Substitutions
  - Layout
  - Sort Order
  - Categories
  - Author Lists
  - Author Name
  - Editor Lists
  - Editor Name
  - Title Capitalization
- Footnotes
  - Templates
  - Field Substitutions
  - Repeated Citations
  - Author Lists
  - Author Name
  - Editor Lists
  - Editor Name
  - Title Capitalization
- Figures & Tables
  - Figures
  - Tables

Bibliography

Reference Types ▾

Insert Field ▸

**Generic**

Author. Title. In: Secondary Author, editor, editors. Secondary Title. Edition. Place Published. Publisher. Year. p. Pages.

**Audiovisual Material**

Author. Title. [Type]. Place Published. Publisher. Year.

**Bill**

Title. S. Code Section. Legislative Body. Session. Sess. (Year).

**Blog**

Author. Title of WebLog. [Internet]. Editor, editors. Place Published. Publisher. Year Last Update Date. [cited Access Year Access Date]. Available from: URL.

**Book**

Author. Title. Edition. Series Editor, editors. Place Published. Publisher. Year. Date. Number of Pages. p.

**Book Section**

Author. Title | . Journal | . Year | ; Volume | (Issue) | : Pages | .

Author. Title

Author, editor

Dictionary

Dictionary: T

Author. Title | . Journal | . Year | ; Volume | (Issue) | : Pages | (Language) | .

Author. Title

**Conference**

Author. Title

**Conference**

Author, editor

**Dictionary**

Dictionary: T

**Edited Book**

Editor, editor

**Electronic Article**

Author. Title. Periodical Title. [Internet]. Year Date Accessed. [cited Year Cited Date Cited]. Volume (Issue): [Pages. p.] pp. Available from: URL.

**Electronic Book**

Author. Title. [Type of Medium]. Place Published. Publisher. Year. [cited Year Cited Date Cited]. Available from: URL.

**Electronic Book Section**

Author. Title. Year Date. [cited Access Date]. In: Book Title. [Internet]. Place Published. Publisher. Edition. Series Title. [cited Access Date]. [Pages]. Available from: URL.

**Hearing**

Title. Hearing before the Committee. Legislative Body. Session. Sess. (Date, Year).

**Journal Article**

Author. Title. Journal. Year; Volume (Issue); Pages.

**Legal Rule or Regulation**

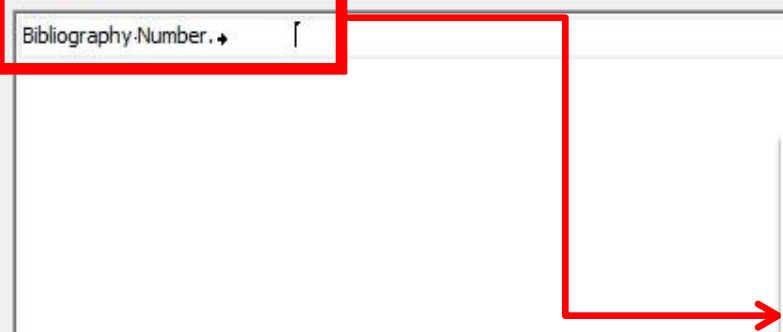
Title. Rule Number. Abbreviation. Sect. Section Number (Year).

**Magazine Article**

- About this Style
- Punctuation
- Anonymous Works
- Page Numbers
- Journal Names
- Sections
- Citations
  - Templates
  - Ambiguous Citations
  - Author Lists
  - Author Name
  - Numbering
  - Sort Order
- Bibliography**
  - Templates
  - Field Substitutions
  - Layout**
  - Sort Order
  - Categories
  - Author Lists
  - Author Name
  - Editor Lists
  - Editor Name
  - Title Capitalization
- Footnotes
  - Templates
  - Field Substitutions
  - Repeated Citations
  - Author Lists
  - Author Name
  - Editor Lists
  - Editor Name
  - Title Capitalization
- Figures & Tables
  - Figures
  - Tables

Start each reference with: Insert Field ▶

Bibliography-Number. ↘ [



Bibliography Number.  
.  
.  
.  
[Bibliography Number].

End each reference with: Insert Field ▶



**Any Questions**